

When it comes to fire door closers

• **Fire Door.**
safety first!

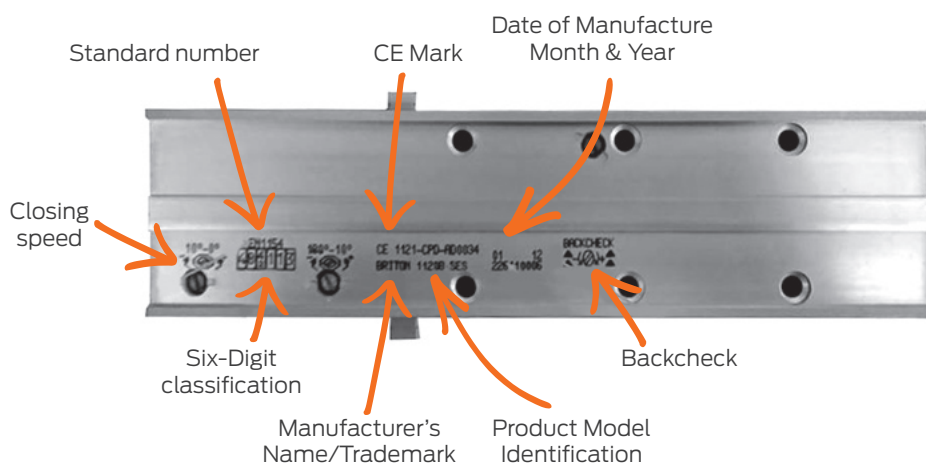
Don't risk non-compliance!

Door closers are an essential element in safeguarding lives and property. Their purpose is to keep doors closed in the event of a fire to stop it spreading. If installing a closer on a fire door it must be fire-rated and CE marked. Remove the cover to check for markings or refer to manufacturers certification.

Certification

It is recommended that a minimum power size 3 door closer is used on a fire door.

The closer must be CE marked, tested to EN 1154 standard and fire rated to EN 1634.

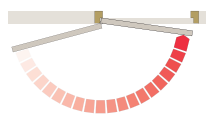


Closer Adjustments Explained

Locate the adjusting valves on the closer and turn them to increase or decrease until the door closes in a safe and controlled way.

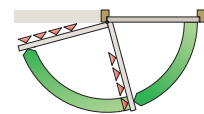
Adjustable closing power

PowerAdjust mechanism provides a visual guide on the EN power level at which the closer has been adjusted.



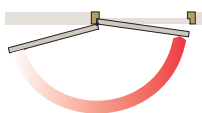
Adjustable backcheck

To prevent damage to the door, hardware and adjacent walls caused by the door being flung open or caught by a gust of wind. Angle at which the backcheck is activated is usually adjustable.



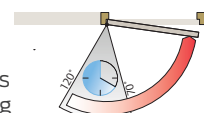
Adjustable closing speed

Adjustable from 180° opening through to the final 15°.



Adjustable delayed action

The closer can be set to close more slowly to give people extra time to pass through the doorway. Adjustable timing between 70° and 120°.



Adjustable latch action

The speed of closing in the last 15° can be adjusted to overcome seals and latches.



Adjustable hold-open

Mechanical and electro-magnetic hold-open variants are available to hold the door in the open position.

